



WET ABRASIVE BLASTING SYSTEM



A new blasting experience

How it works:

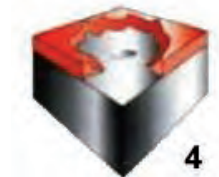
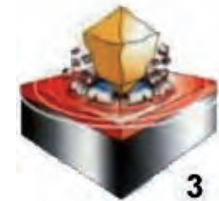
The decisive factor is the interaction of blasting media, water and pressure. Because these three factors can be metered separately and independently.

- (1) Each grain of the abrasive is already surrounded in the vessel water.
- (2) The surface tension of water formed each grain to a perfect sphere, which fits perfectly into air stream and ensures an optimized flow rate. Additionally that prevents the wear of the tubes and nozzles.
- (3) On the surface the water layer prevents the rebound of the grain (dust) and pulls the removed materials down.
- (4) The result is a cleaned surface.

Depending on the settings the blast can strike the surface as gently that you can clean a raw egg with it or it can be so powerful that a thick layer of paint will be removed.

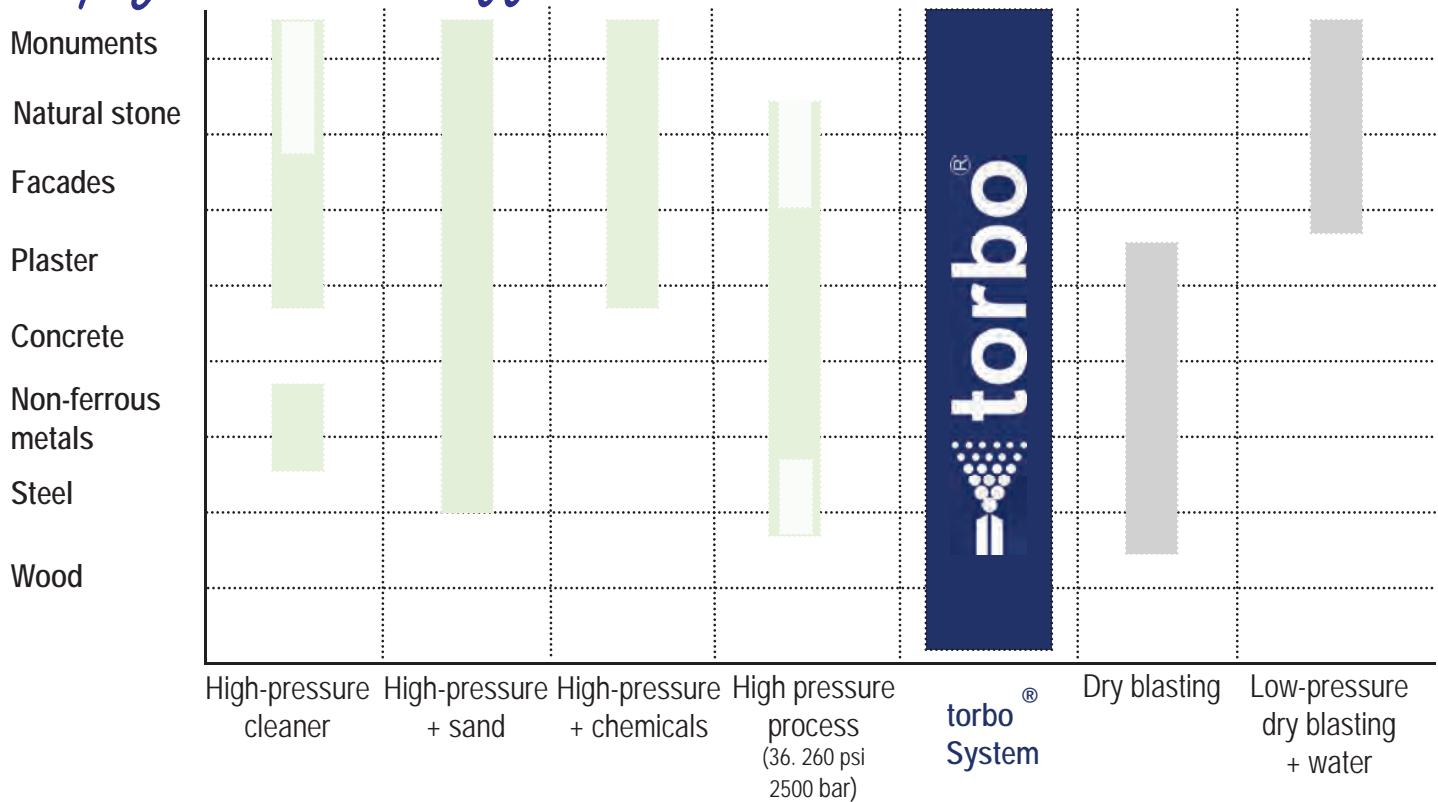
Benefits*

- 95 % dust- free
- 60 % less consumption of blasting media
- Economical and versatile
- Useable at temperatures between 4°C and 50°C
- Blast up to 66 ft (200 m)
- can be used in EX-protected areas



* compared to dry blasting

Simply the most efficient.



Gentle cleaning and repair

torbo systems have been widely deployed on many prestigious projects to restore monuments and building facades. torbo's gentle cleaning action restores stone and brickwork to its pristine glory. The flexible nature of the system allows for precise and specific finish requirements to be achieved, regardless of the surface condition or source material.



More power, less consumption

torbo's advanced cleaning system is not only ideal for the repair and maintenance of ships and boats. Quick and reliable, torbo systems are used by Highways Contractors and Local Authorities for asbestos removals, bridge and infrastructure maintenance and repair.



Applications



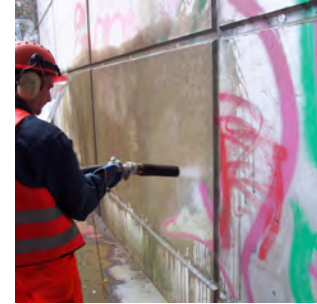
Concrete



Bricks / Facades



Asbestos etc.



Graffiti



Offshore



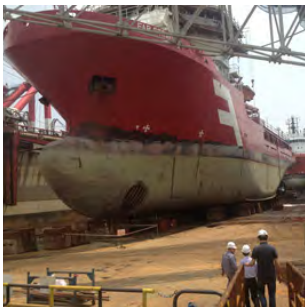
Monuments



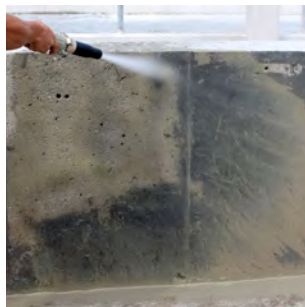
Steel



Wood



Ships



Fire damages



Petrochemical



Plastic / GRP

**For more information & referenes:
www.torbo24.com**

Technology plus expertise.

All torbo systems are quality made in Germany and have been successfully further developed since 1984. Benefit from the economic and sustainable functioning of torbo systems and use our expertise and our individual engineering services.



Optimal training for professional use.

With only one torbo system, different projects can be successfully processed, depending on the setting, the choice of accessories and the abrasive. Our training programme will show you how to use all the functions of your torbo effectively: from beginners to refreshers.



Rent a machine.

You don't want to buy a machine at the moment? Then please feel free to make use of our rental service. You benefit from all the advantages of our rental park during the entire rental period, coupled with comprehensive support, know-how and service.



Your contact worldwide.

To ensure that all customers worldwide receive the same professional support, we have reliable partners all over the world. Contact us and we will put you in touch with a service partner near you.

torbo HOME APPLICATIONS PRODUCTS REFERENCES SERVICE COMPANY NEWS CONTACT

dealer search

continent:
North America
Middle and South America
Europe
Africa
Asia and the Middle East
Australia and Pacific Islands

Please choose a continent.

Be a torbo dealer!
Are you interested in a partnership with torbo?
Do you want to include our products in your range?
Then contact us!
Tel.: +49 (0) 2861 - 942-90
Email: info@torbo.de



	Softline XS	Softline S	torbo M	torbo L	torbo XL
Vessel size	15,85 gal (60 l)	15,85 gal (60 l)	17,60 (26,40) gal (80 l optional 120 l)	26,40 (52,79) gal (120 l optional 240 l)	52,79 (70,39) gal (240 l optional 320 l)
Size air connection (in)	1/2	3/4	1	1 1/2	2
Connected air (cfm)	53 - 99 (1,5 - 2,8 m³/min.)	98 - 141 (2,8 - 4,0 m³/min.)	71 - 212 (2,0 - 6,0 m³/min.)	106 - 353 (3,0 - 10,0 m³/min.)	530 (15,0 m³/min.)
Weight empty (lbs)	250 - 290 (115-130 kg)	290 (130 kg)	265 - 386 (120-175 kg)	265 - 397 (120-180 kg)	485 - 661 (220-300 kg)
Dimensions (in) (H x W x D)	22 x 20 x 39 (990 x 570 x 520 mm)	22 x 20 x 39 (990 x 570 x 520 mm)	28 x 26 x 44 (720 x 660 x 1.130 mm) 33 x 26 x 48 (830 x 660 x 1.220 mm)	28 x 26 x 44 (720 x 660 x 1.130 mm) 33 x 26 x 48 (830 x 660 x 1.220 mm)	43 x 30 x 54 (1.100 x 750 x 1.360 mm) 50 x 30 x 59 (1.260 x 750 x 1.490 mm)

About torbo:



Headquarters, Borken/ Germany

Since 1984 torbo ENGINEERING KEIZERS GmbH has been defining the standard by which blasting equipment must measure itself. We have developed and patented the principle. torbo wet sandblasting machines are engineering achievements Made in Germany and guarantee a quality that pays off in tough everyday use through reliability and durability. torbo is regarded worldwide as the epitome of the most modern blasting technology, which is characterized by universal application possibilities and outstanding cost savings.



	torboCar AC30	torboCar AC50	torboCar AC76	torboCar AC84
Vessel size	17,60 gal (80 l)	26,40 gal (120 l)	52,79 gal (240 l)	70,39 gal (320 l)
Water tank	54,99 gal (250 l)	54,99 gal (250 l)	79,19 gal (360 l)	79,19 gal (360 l)
Hose reel	131 fz (40 m) (hose 25/7)	131 fz (40 m) (hose 25/7)	197 fz (60 m) (hose 25/7)	197 fz (60 m) (hose 25/7)
Compressor	109 cfm with 102 psi 3,1 m ³ /min with 7 bar	177 cfm with 102 psi 5,0 m ³ /min with 7 bar	268 cfm with 102 psi 7,6 m ³ /min with 7 bar	297 cfm with 102 psi 8,4 m ³ /min with 7 bar
Connected air (cfm)	71 - 177 (2 - 5 m ³ /min)	106 - 353 (3 - 10 m ³ /min)	141 - 530 (4 - 15 m ³ /min)	141 - 530 (4 - 15 m ³ /min)
Weight (empty) (lbs)	2.866 - 3.197 (1.300 - 1.450 kg)	2.866 - 3.197 (1.300 - 1.450 kg)	4.079 - 4.409 (1.850 - 2.000 kg)	4.079 - 4.409 (1.850 - 2.000 kg)
Dimensions (in) (H x W x D)	183 x 77 x 61 (4.660 x 1.950 x 1.560 mm)	183 x 77 x 61 (4.660 x 1.950 x 1.560 mm)	216 x 77 x 74 (5.480 x 1.950 x 1.875 mm)	216 x 77 x 74 (5.480 x 1.950 x 1.875 mm)



Almost every torbo system is also available in ATEX version and complies with the ATEX standard.

You have further questions?

Do you need a torbo machine with special technical features? Or you want your next machine in your company's colours? That's no problem. Just contact us. We'd like to advise you and find for you the perfect machine.





torbo ENGINEERING KEIZERS GmbH

Einsteinstraße 11, 46325 Borken

Germany

www.torbo24.com